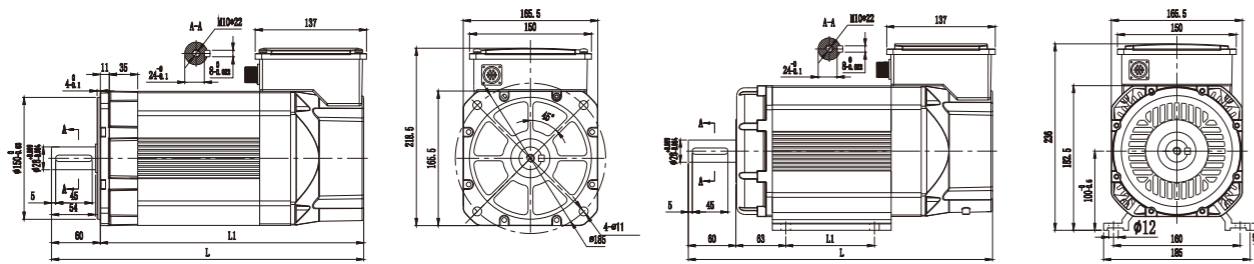


165Y Spindle servo motor

⊙DIMENSION:UNIT=MM



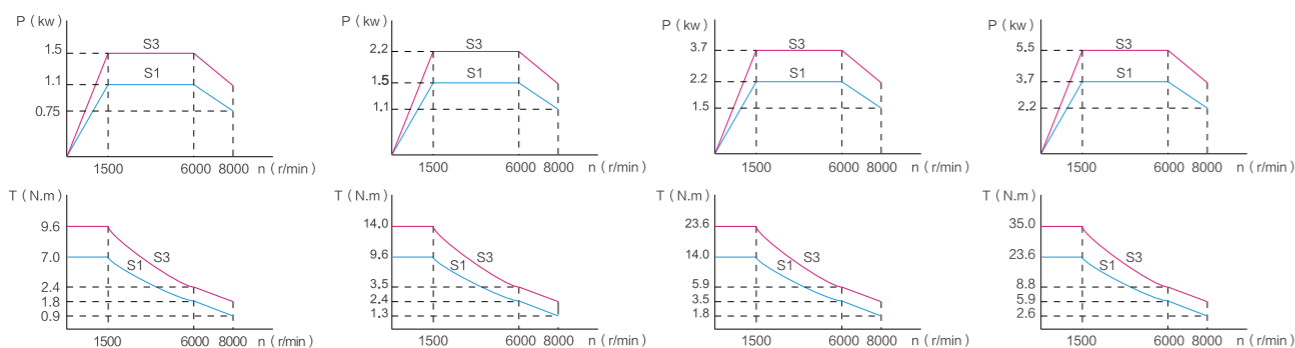
WIRING DIAGRAM	1.1kW	1.5kW	2.2kW	3.7kW
L1	274	294	324	379
L	334	354	384	439

⊙SPECIFICATIONS

MOTORTYPE	RATED POWER (KW)	CURRENT RATING (A)	RATED TORQUE (N.m)	SERIES (P)	RATED FREQUENCY (HZ)	RATED SPEED (R/MIN)	CONSTANT POWER MAXIMUM SPEED (R/MIN)	MAXIMUM SPEED (R/MIN)	MOMENT OF INERTIA (KG.M)	WEIGHT (KG)
MY165-070CGDI4-01B000	1.1	2.6	7.0	4	52.5	1500	6000	8000	0.0058	14
MY165-096CGDI4-01B000	1.5	3.4	9.6	4	52.5	1500	6000	8000	0.0066	16
MY165-140CGDI4-01B000	2.2	4.9	14.0	4	52.5	1500	6000	8000	0.0078	22
MY165-235CGDI4-01B000	3.7	7.8	23.5	4	52.5	1500	6000	8000	0.0108	30

⊙CHARACTERISTIC CURVE

MY165-070CGDI4-01B000 MY165-096CGDI4-01B000 MY165-140CGDI4-01B000 MY165-235CGDI4-01B000

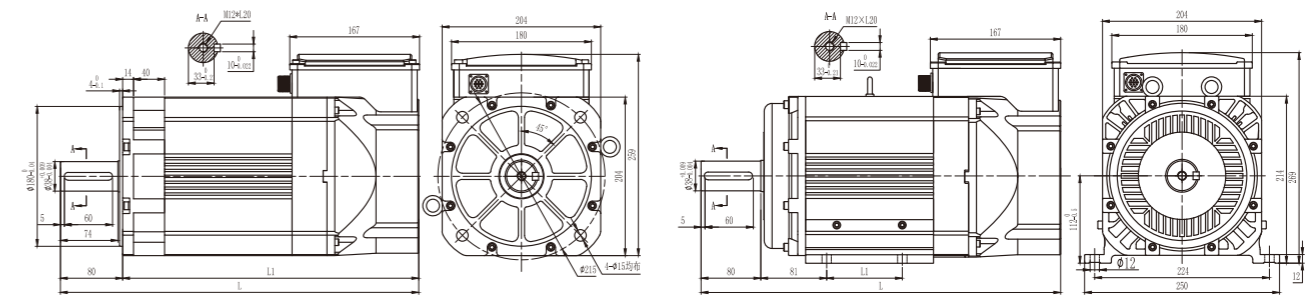


⊙PERFORMANCE

NAME	ENCODER (OPTIONAL)	SHAFT EXTENSION STRUCTURE	MOUNTING	PROTECTION CLASS	INSULATION CLASS	VIBRATION CLASS	NOISE	AMBIENT TEMPERATURE	ENVIRONMENT HUMIDITY	
INDEX	I1	1000 Incremental	A:Plain shaft	B3, B35, B5	IP55	F class	S	≤70dB	-15~45°C	≤95%RH
	I2	2500 Incremental	B:With keyway							
	R2	Rotary								
	A1	17bits absolute								

204Y Spindle servo motor

⊙DIMENSION:UNIT=MM



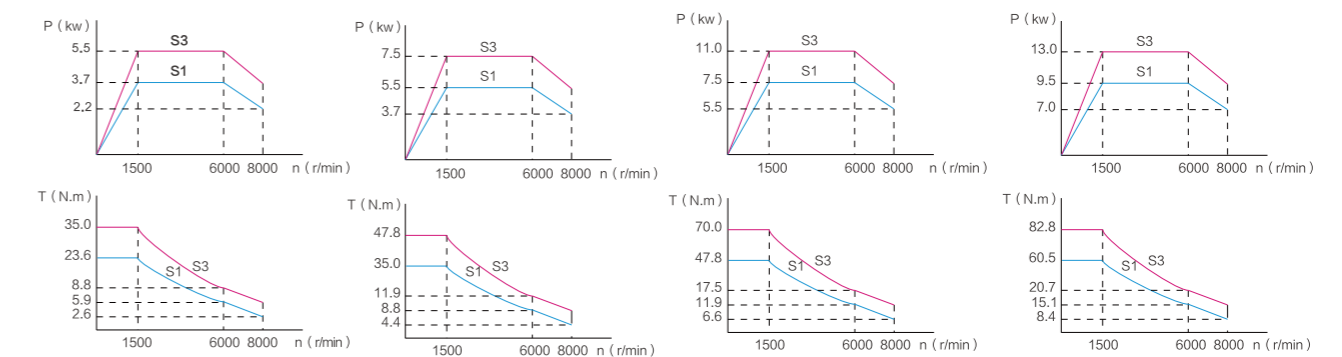
WIRING DIAGRAM	3.7kW	5.5kW	7.5kW	9.5kW
L1	381	427	482	519
L	461	507	562	597

⊙SPECIFICATIONS

MOTOR TYPE	RATED POWER (KW)	CURRENT RATING (A)	RATED TORQUE (N.m)	SERIES (P)	RATED FREQUENCY (HZ)	RATED SPEED (R/MIN)	CONSTANT POWER MAXIMUM SPEED (R/MIN)	MAXIMUM SPEED (R/MIN)	MOMENT OF INERTIA (KG.M)	WEIGHT (KG)
MY204-235CGDI4-00B000	3.7	9.1	23.5	4	51.5	1500	6000	8000	0.0162	34.6
MY204-350CGDI4-00B000	5.5	13.0	35.0	4	51.5	1500	6000	8000	0.0210	43.6
MY204-478CGDI4-00B000	7.5	17.8	47.8	4	51.5	1500	6000	8000	0.0267	54.4
MY204-605CGDI4-00B000	9.5	23.8	60.5	4	51.5	1500	6000	8000	0.0304	61.2

⊙CHARACTERISTIC CURVE

MY204-235CGDI4-00B000 MY204-350CGDI4-00B000 MY204-478CGDI4-00B000 MY204-605CGDI4-00B000

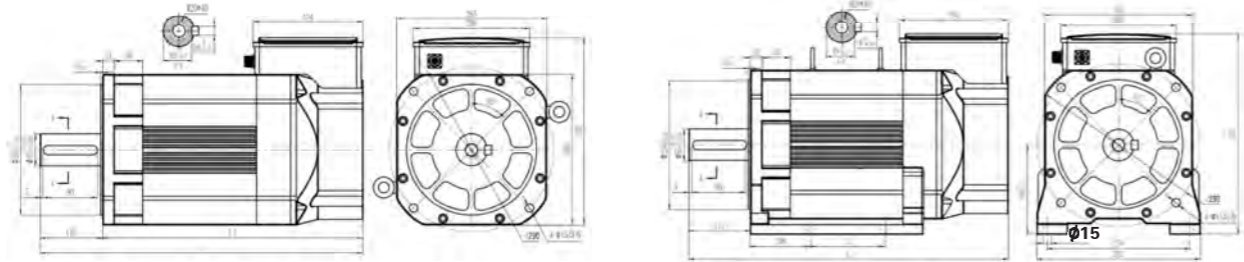


⊙PERFORMANCE

NAME	ENCODER (OPTIONAL)	SHAFT EXTENSION STRUCTURE	MOUNTING	PROTECTION CLASS	INSULATION CLASS	VIBRATION CLASS	NOISE	AMBIENT TEMPERATURE	ENVIRONMENT HUMIDITY	
INDEX	I1	1000 Incremental	A:Plain shaft	B3, B35, B5	IP55	F class	S	≤70dB	-15~45°C	≤95%RH
	I2	2500 Incremental	B:With keyway							
	R2	Rotary								
	A1	17bits absolute								

265Y Spindle servo motor

⊙ DIMENSION: UNIT=MM



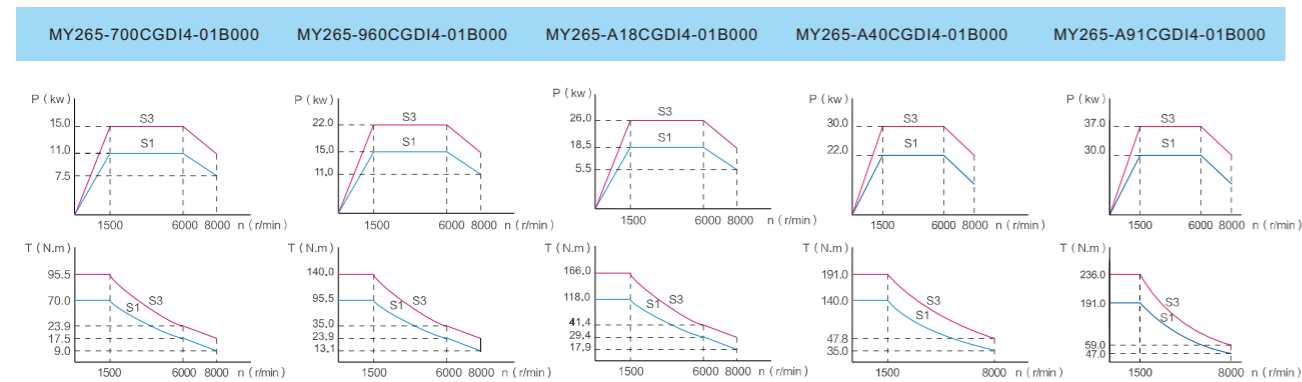
IRING DIAGRAM	11kW	15kW	18.5kW	22kW	30kW
L1	460	510	565	610	680
L	570	620	675	720	790

IRING DIAGRAM	11kW	15kW	18.5kW	22kW	30kW
L1	133	173	218	243	243
L	570	620	675	720	790

⊙ SPECIFICATIONS

MOTORTYPE	RATED POWER (KW)	CURRENT RATING (A)	RATED TORQUE (N.m)	SERIES (P)	RATED FREQUENCY (HZ)	RATED SPEED (R/MIN)	CONSTANT POWER MAXIMUM SPEED (R/MIN)	MAXIMUM SPEED (R/MIN)	MOMENT OF INERTIA (KG.M)	WEIGHT (KG)
MY265-700CGDI4-01B000	11	21.5	70	4	51.5	1500	6000	8000	0.0491	87
MY265-960CGDI4-01B000	15	29.0	96	4	51.5	1500	6000	8000	0.0603	117
MY265-A18CGDI4-01B000	18.5	35.2	118	4	51.5	1500	6000	8000	0.0715	137
MY265-A40CGDI4-01B000	22	42.3	140	4	51.5	1500	6000	8000	0.0824	150
MY265-A91CGDI4-01B000	30	51.0	191	4	51.5	1500	6000	8000	0.0930	163

⊙ CHARACTERISTIC CURVE

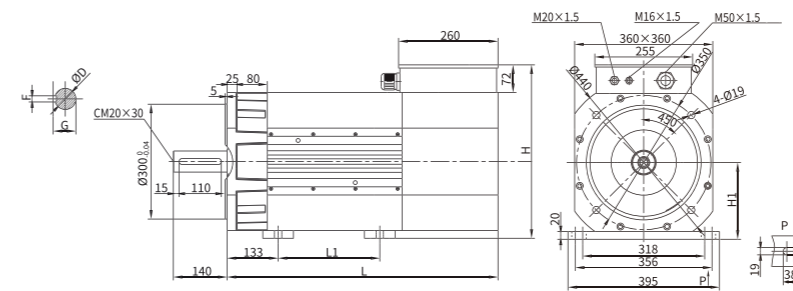


⊙ PERFORMANCE

NAME	ENCODER (OPTIONAL)	SHAFT EXTENSION STRUCTURE	MOUNTING	PROTECTION CLASS	INSULATION CLASS	VIBRATION CLASS	NOISE	AMBIENT TEMPERATURE	ENVIRONMENT HUMIDITY	
INDEX	I1	1000 Incremental	A: Plain shaft	B3, B35, B5	IP55	F class	S	≤70dB	-15~45°C	≤95%RH
	I2	2500 Incremental	B: With keyway							
	R2	Rotary								
	A1	17bits absolute								

LZSM-360 Spindle servo motor

⊙ INSTALLATION DIMENSION



⊙ SPECIFICATIONS

Model Specifications	Power kW		speed r/min			voltage V	Current A		Torque Nm		Inertia kgm ²	Frame size
	Continuous rating	30 minute overload	Rated speed	Max. constant power speed	Max speed		Continuous rating	30 Minute overload	Continuous rating	30 Minute overload		
LZSM-380-360S-7.5-30-015-**-**	15	18.5	750	1800	3000	380	29.4	35.9	191	236	0.2979	360S
LZSM-380-360M-7.5-30-18R5-**-**	18.5	22					35.9	43.7	236	280	0.3724	360M
LZSM-380-360L-7.5-30-022-**-**	22	26					43.7	53	280	331	0.4469	360L
LZSM-380-360H-7.5-30-030-**-**	30	37					61	72.5	382	471	0.5362	360H
LZSM-380-360E-7.5-30-037-**-**	37	45					72.5	88.2	471	573	0.6405	360E
LZSM-380-360S-10-40-022-**-**	22	26	1000	2500	4000	380	41.9	50.4	210	248	0.2979	360S
LZSM-380-360M-10-40-026-**-**	26	30					50.4	57.9	248	287	0.3724	360M
LZSM-380-360L-10-40-030-**-**	30	37					57.9	70.3	287	353	0.4469	360L
LZSM-380-360H-10-40-037-**-**	37	45					70.3	87.2	353	430	0.5362	360H
LZSM-380-360E-10-40-045-**-**	45	55					87.2	105	430	525	0.6405	360E
LZSM-380-360S-15-45-030-**-**	30	37	1500	3600	4500	380	56	68.5	191	236	0.2979	360S
LZSM-380-360M-15-45-037-**-**	37	45					68.5	84.1	236	287	0.3724	360M
LZSM-380-360L-15-45-045-**-**	45	55					84.1	103.6	287	350	0.4469	360L
LZSM-380-360H-15-45-055-**-**	55	75					103.6	139.8	350	478	0.5362	360H
LZSM-380-360E-15-45-075-**-**	75	90					139.8	167	478	573	0.6405	360E

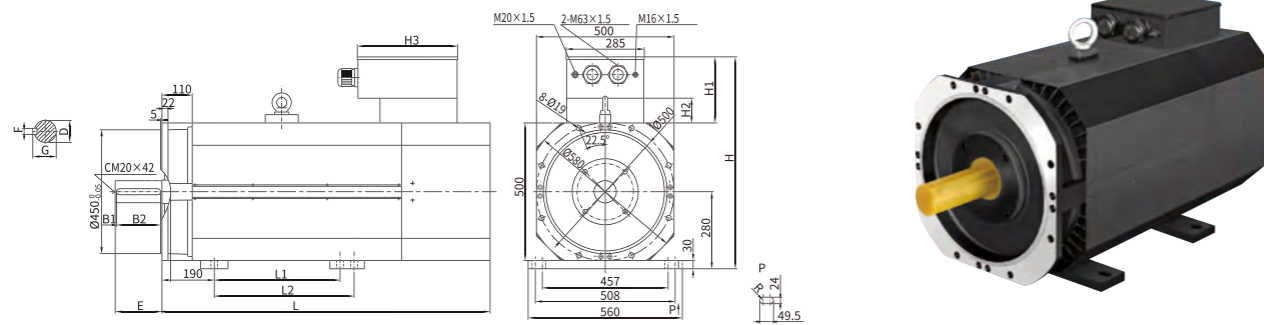
⊙ FUSELAGEMODEL

Frame size	L	L1	H	H1	D	F	G
360S	713	265	452	200	55h5 (0/-0.013)	16	59
360M	763	315	477	225	55h5 (0/-0.013)	16	59
360L	813	365	477	225	60h5 (0/-0.013)	18	64
360H	873	425	477	225	60h5 (0/-0.013)	18	64
360E	943	495	477	225	60h5 (0/-0.013)	18	64

LZSM-500 Spindle servo motor

Motorized Milling Spindle

⊙ INSTALLATION DIMENSION

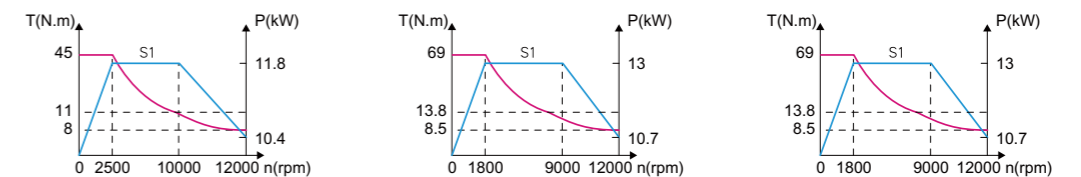


⊙ SPECIFICATIONS

Model Specifications	Power kW		speed r/min			voltage V	Current A		Torque Nm		Inertia ₂ kgm ²	Frame size
	Continuous rating	30 minute overload	Rated speed	Max. constant power speed	Max speed		Rated voltage	Continuous rating	30 Minute overload	Continuous rating		
LZSM-380-500S-7.5-30-045—*-*.*	45	55	750	1800	3000	380	83.1	101.2	573	700	1.7479	500S
LZSM-380-500M-7.5-30-055—*-*.*	55	70					101.2	130	700	891	2.1225	500M
LZSM-380-500L-7.5-30-065—*-*.*	65	75					120	140.4	828	955	2.6219	500L
LZSM-380-500H-7.5-30-075—*-*.*	75	90					140.4	166.3	955	1146	2.934	500H
LZSM-380-500E-7.5-30-090—*-*.*	90	110					166.3	201	1146	1401	3.3085	500E
LZSM-380-500S-10-40-055—*-*.*	55	75	1000	2500	4000	380	99.8	136.9	525	716	1.7479	500S
LZSM-380-500M-10-40-075—*-*.*	75	90					136.9	163.9	716	860	2.1225	500M
LZSM-380-500L-10-40-090—*-*.*	90	110					163.9	201.1	860	1051	2.6219	500L
LZSM-380-500H-10-40-110—*-*.*	110	132					201.1	240.4	1051	1261	2.934	500H
LZSM-380-500E-10-40-132—*-*.*	132	145					240.4	289.6	1261	1528	3.3085	500E
LZSM-380-500S-15-40-090—*-*.*	90	110	1500	3600	4000	380	162.2	198.5	573	700	1.7479	500S
LZSM-380-500M-15-40-110—*-*.*	110	132					198.5	238.4	700	840	2.1225	500M
LZSM-380-500L-15-40-132—*-*.*	132	160					238.4	286.3	840	1018	2.6219	500L
LZSM-380-500H-15-40-160—*-*.*	160	185					286.3	330	1018	1178	2.934	500H
LZSM-380-500E-15-40-185—*-*.*	185	200					330	390	1178	1401	3.3085	500E

Specification	BCES-BT40A-4011-2500/12000	BCES-BT40D-4013-1800/12000	BCES-BT40D-4013-1800/12000-R
Rated power (kW)	11	13	13
Rated current (A)	28	37.6	37.6
Rated torque (N.m)	45	69	69
Rated speed (rpm)	2,500	1,800	1,800
Max. speed (rpm)	12,000	12,000	12,000
Type of motor	Asynchronous	Asynchronous	Asynchronous
Pole number	4	4	4
Lubrication	Grease	Grease	Grease
Type of cooling	Liquid cooling	Liquid cooling	Liquid cooling
Tool coupling	BT40	BT40	BT40
Taper hole accuracy (mm)	0.002	0.002	0.002
Tool external cooling	YES	YES	YES
Tool internal cooling	NO	NO	YES
Tool declamp	Hydraulic	Hydraulic	Hydraulic
Weight (kg)	90	125	125

Torque curves



Overall dimensions

